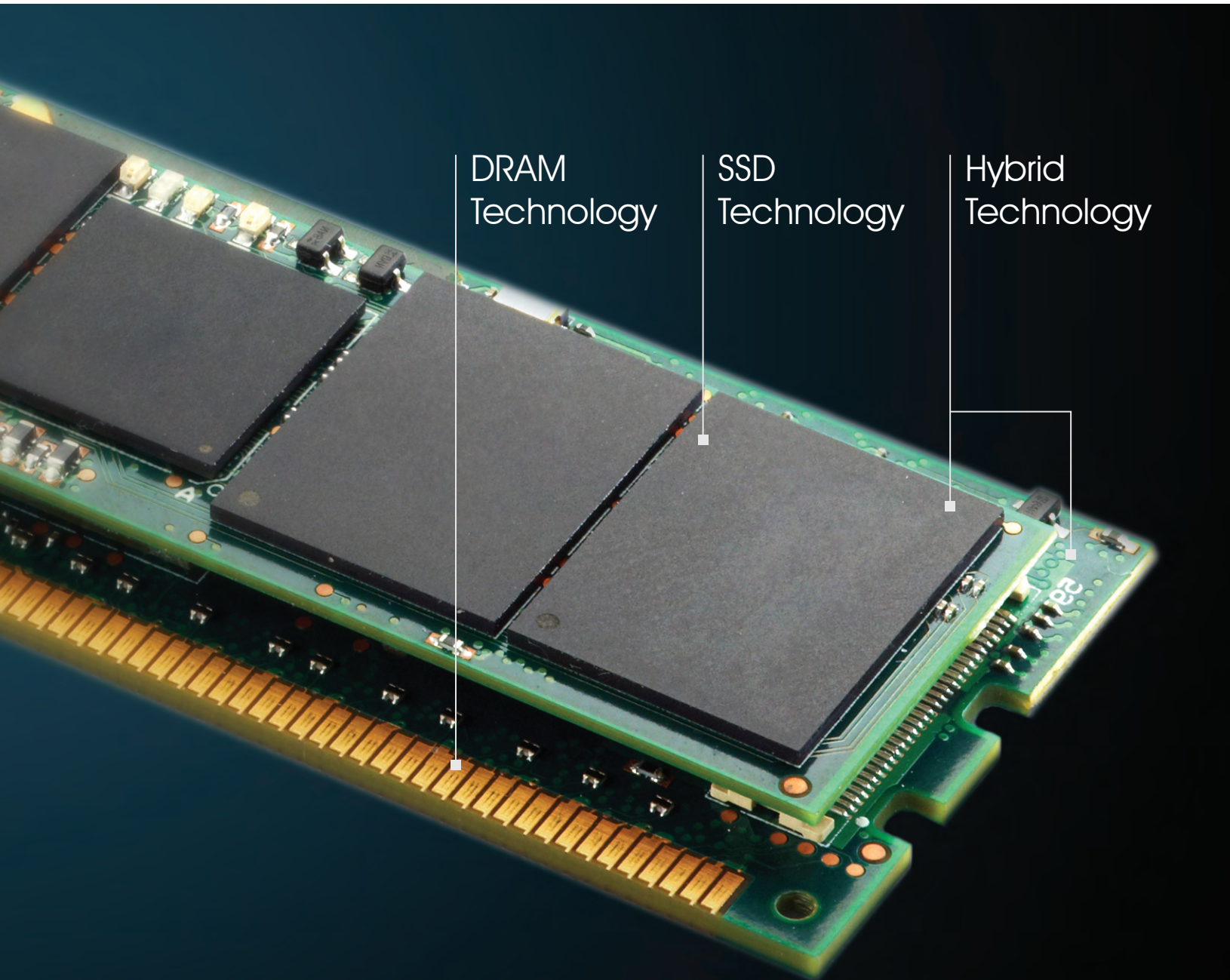


Enterprise Storage Solutions

with high-performance hybrid, SSD, and
DRAM technology

Storage Arrays | Servers | SBB | Blade Servers | NAS | DAS | SAN



SATADIMM™

Enterprise SSD in a DIMM Form Factor

60,000 IOPS

6Gb SATA & SAS

Up to 480GB

DDR3 DIMM Integration

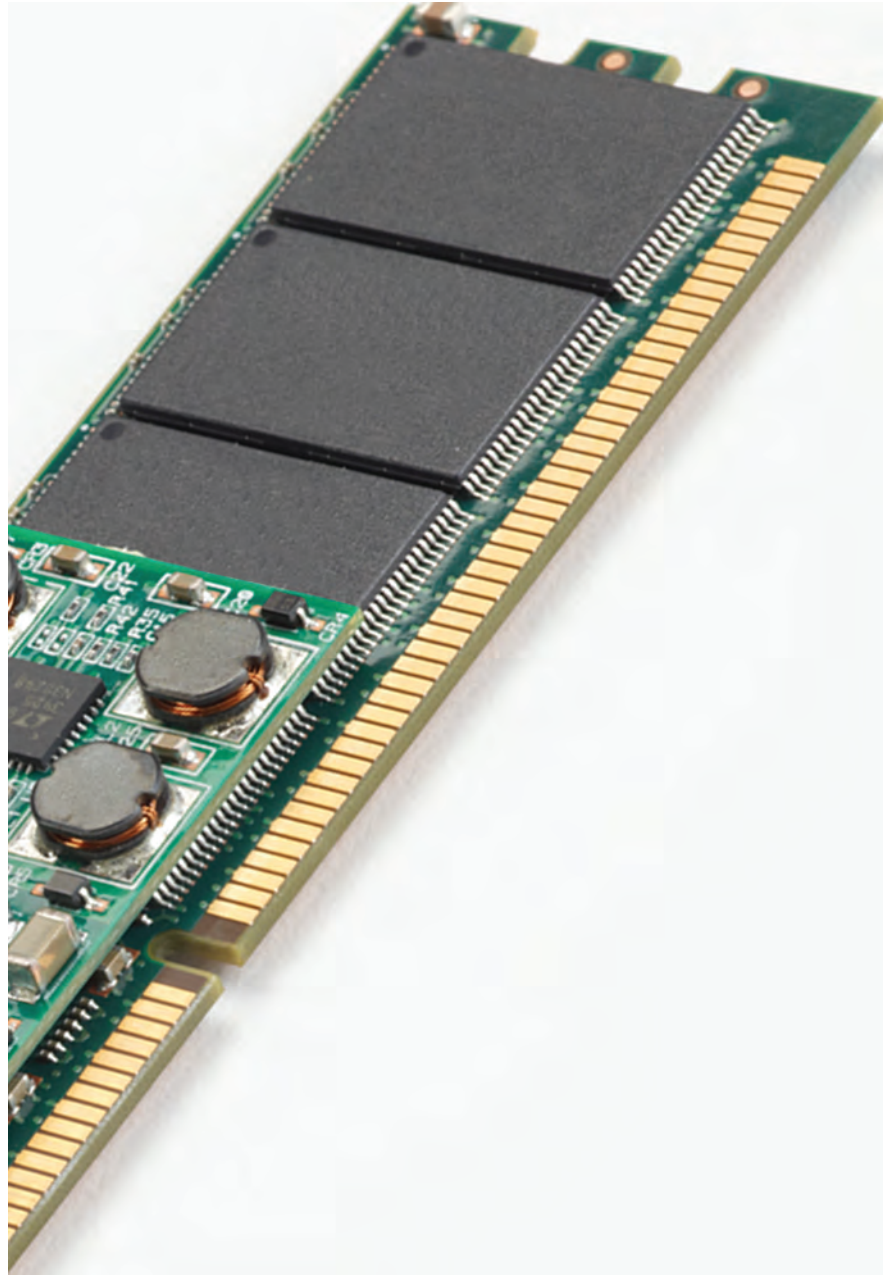
1/4 the footprint of a
2.5" SSD

Hybrid Technology

Form Factor Efficiency

"Some designs would consume space for SSDs that could otherwise be used for HDDs. Since we reduce overall cost by maximizing total storage/computer, using SATADIMM is more cost effective in the designs where space for HDDs is compromised by 2.5" SSDs."

~Tier 1: Enterprise customer



Comparative Performance per 1U (rack unit)

Flash Optimized Form Factor vs. Standard 2.5" Form Factor



SATADIMM Benefit ■ 64 SSD per Rack Unit

■ Performance of a full Rack in a 1U server form factor

■ Adds SSDs without utilizing existing drive bays; allowing for extra HDD capacity storage

ARXCIS

Hybrid Non-Volatile Dimm

Persistent Memory

Battery Free

10 Years Data Retention

Zero Recurring Costs

Storage Class Solution

Data Protection

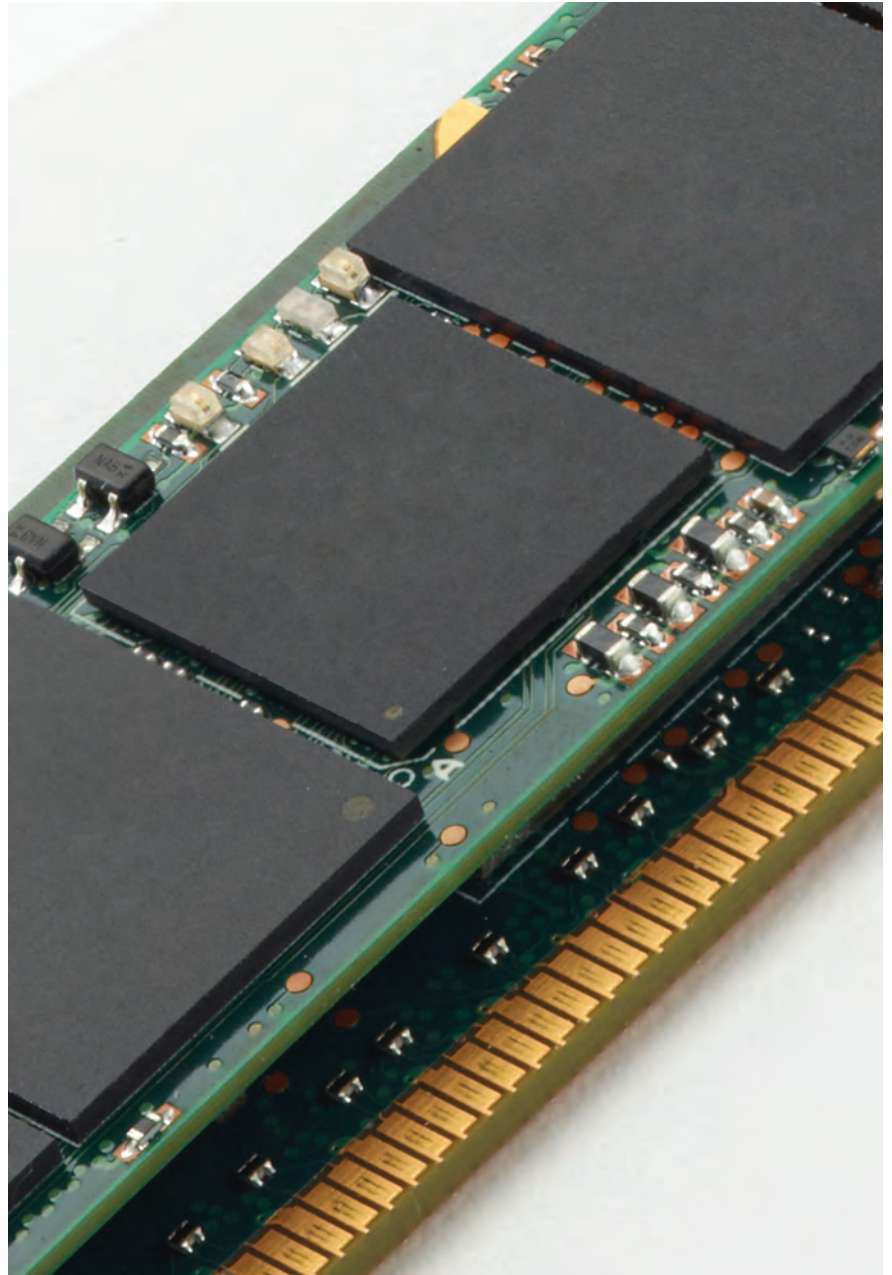
Data retention for up to 10 years
Continuous health monitoring
100% data security

Zero Recurring Costs

No system downtime
No battery replacement
No battery disposal

Increased Productivity

No scheduled downtime for battery swap-out
No scheduled downtime for power failures



DDR3 Non-Volatile Hybrid Memory Solution for Storage and Server Appliances

ArxCis-NV is a storage class memory module designed to preserve data in the event of a system power failure, thus providing data security and reliability. Where previous systems relied on cumbersome, costly, and environmentally impactful batteries, ArxCis-NV now offers a reliable, secure, maintenance-free and disaster-free persistent memory solution for the enterprise.

ELEMENT SSD

Enterprise SSD for Storage and Server Environments

60,000 IOPS

6Gb SATA & SAS

Up to 480GB

2.5" & 1.8" Form Factor

AES-256

Power Fail Data Security

Purge Security



High performance enterprise solid state drives

Engineered for the highest levels of performance and reliability, Viking Technology Element SSDs feature a 6Gb SAS or a 6Gb SATA interface and an advanced parallel NAND channel architecture that delivers best-in-class performance for transaction intensive applications. Element SSDs feature an unparalleled host to NAND write amplification efficiency, for unprecedented endurance. Coupled with patented error detection/correction capabilities and protection against normally catastrophic flash failures, Element SSDs deliver the ideal high-performance storage solution for enterprise applications.

ENTERPRISE MEMORY

DDR3, DDR2, Non-Volatile

Extended Temp Test

Highest Class Capacity

Zero Down-Time

High-Reliability

JEDEC Compliant

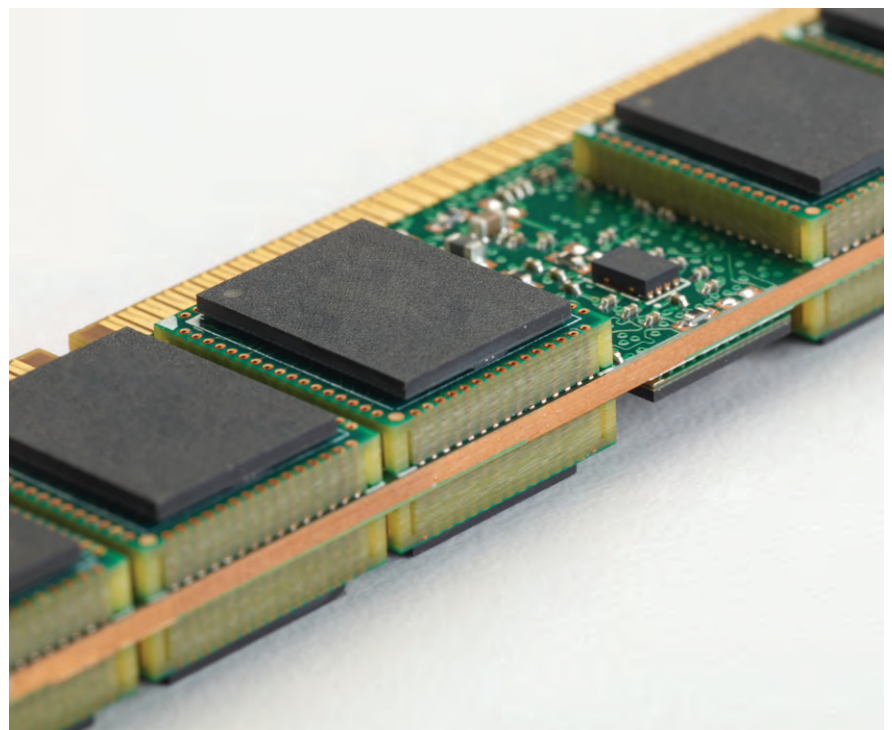
Fault Tolerant

Viking breadth of DRAM form factors

	DDR3	DDR2	ArxCis
LRDIMM	•		•
RDIMM	•	•	•
UDIMM	•	•	
MiniRDIMM	•	•	
MiniUDIMM	•	•	
VLP MiniRDIMM	•	•	
VLP MiniUDIMM	•	•	
VLP RDIMM	•	•	•
VLP UDIMM	•	•	
SODIMM	•	•	
SORDIMM	•	•	
SOUDIMM	•		

BGA Stacking Technology

BGA Stacking DRAM – Optimum solutions for OEM's requiring high density DRAM modules. Built using Viking's patent-pending DDR3 BGA stacking technology, these DRAM modules have been designed for long term reliability in demanding environmental conditions.



Over two decades of development, innovation and leadership in high-performance enterprise storage technologies and solutions. Viking Technology enterprise-level solutions are built for high-reliability, serviceability and supported by worldwide manufacturing and logistics.

WHY VIKING TECHNOLOGY

- Advanced packaging expertise
- Advanced testing and reliability
- Patented power fail data protection ensuring enterprise data integrity
- Best-in-class sequential and random performance
- C-TPAT global supply chain security
- Locked BOM under customer PCN control
- Localized Field Application Engineering for complete pre/post sale technical support
- Two decades of experience and leadership
- Global manufacturing and logistics



U.S. Headquarters

20091 Ellipse
Foothill Ranch, CA 92610
Toll Free: +1 800 338 2361
Main: +1 949 643 7255
Fax: +1 949 643 7250

Europe Headquarters

LerchenstraBe 1 D-91710
Gunzenhausen
Germany
Phone: +49 2921 981 6463

Japan Headquarters

Shinagawa Grand Central Tower 6F
2-16-4 Konan, Minato-ku,
Tokyo 108-0075, Japan
Phone: +81-3-6863-5351

Asia Headquarters

No 2 Chai Chee Drive
Singapore, 109840
Phone: +65 6839 8008

For more information, please visit www.vikingtechnology.com.
Copyright © 2011 Viking Technology, all rights reserved.

